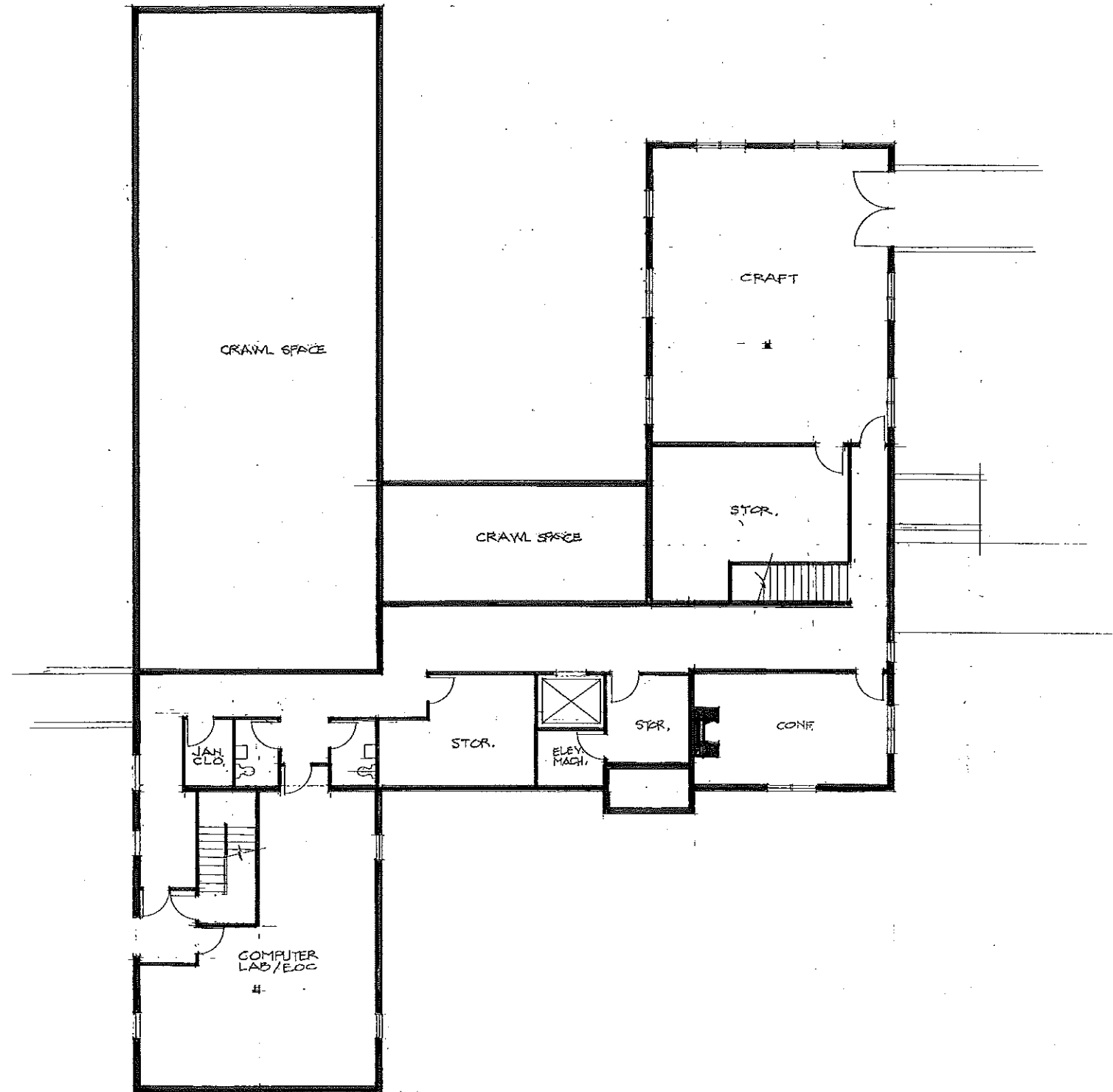


- 1. Jewel Guard Hall
- 2. Balto Building
- 3. West Arcade
- 4. East Arcade
- 5. Future Expansion  
(Original Goode Hall)
- 6. Benny Benson Memorial  
(Alaska Flag Site)

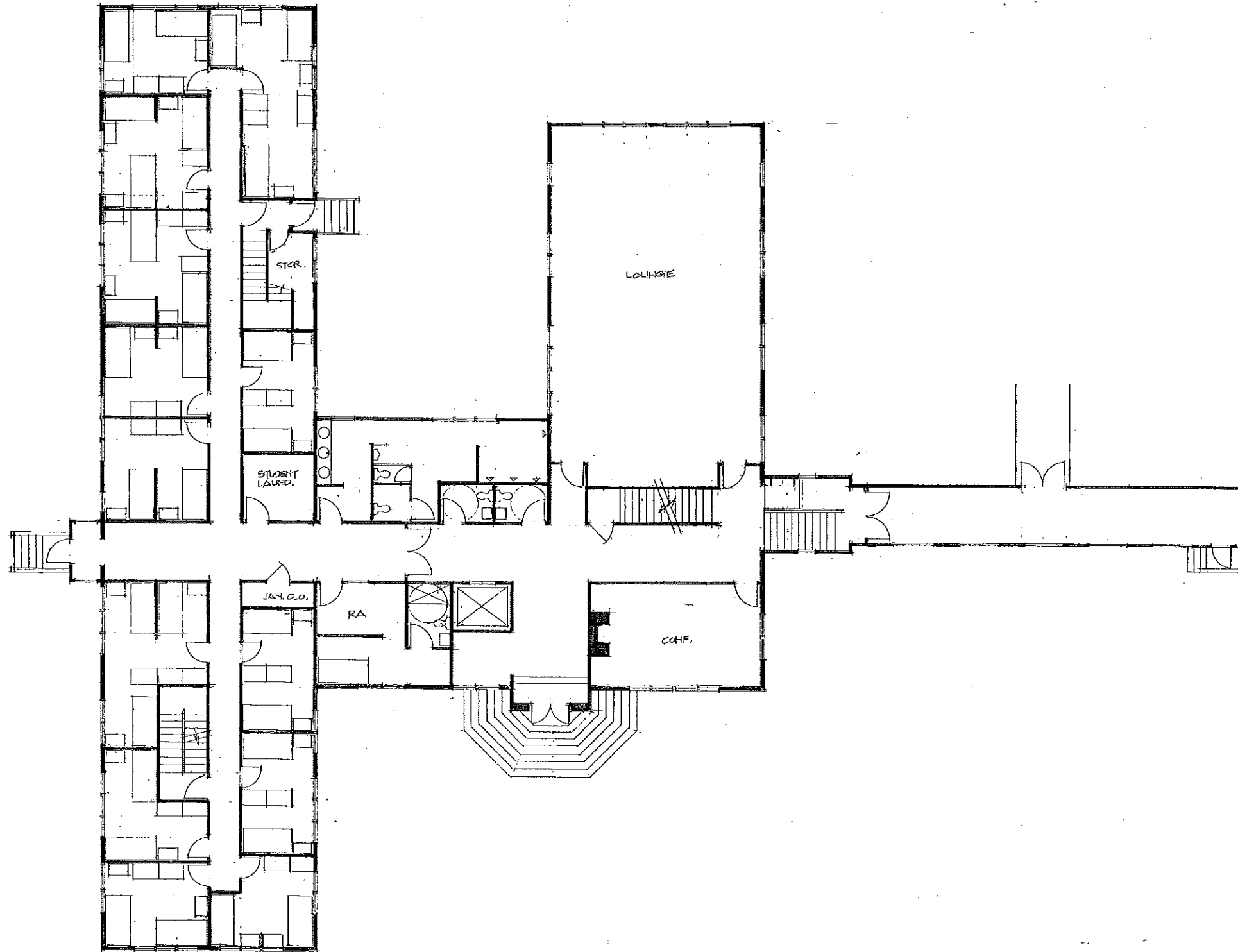
Site Plan

**Jesse Lee Home Rehabilitation**  
Seward, Alaska

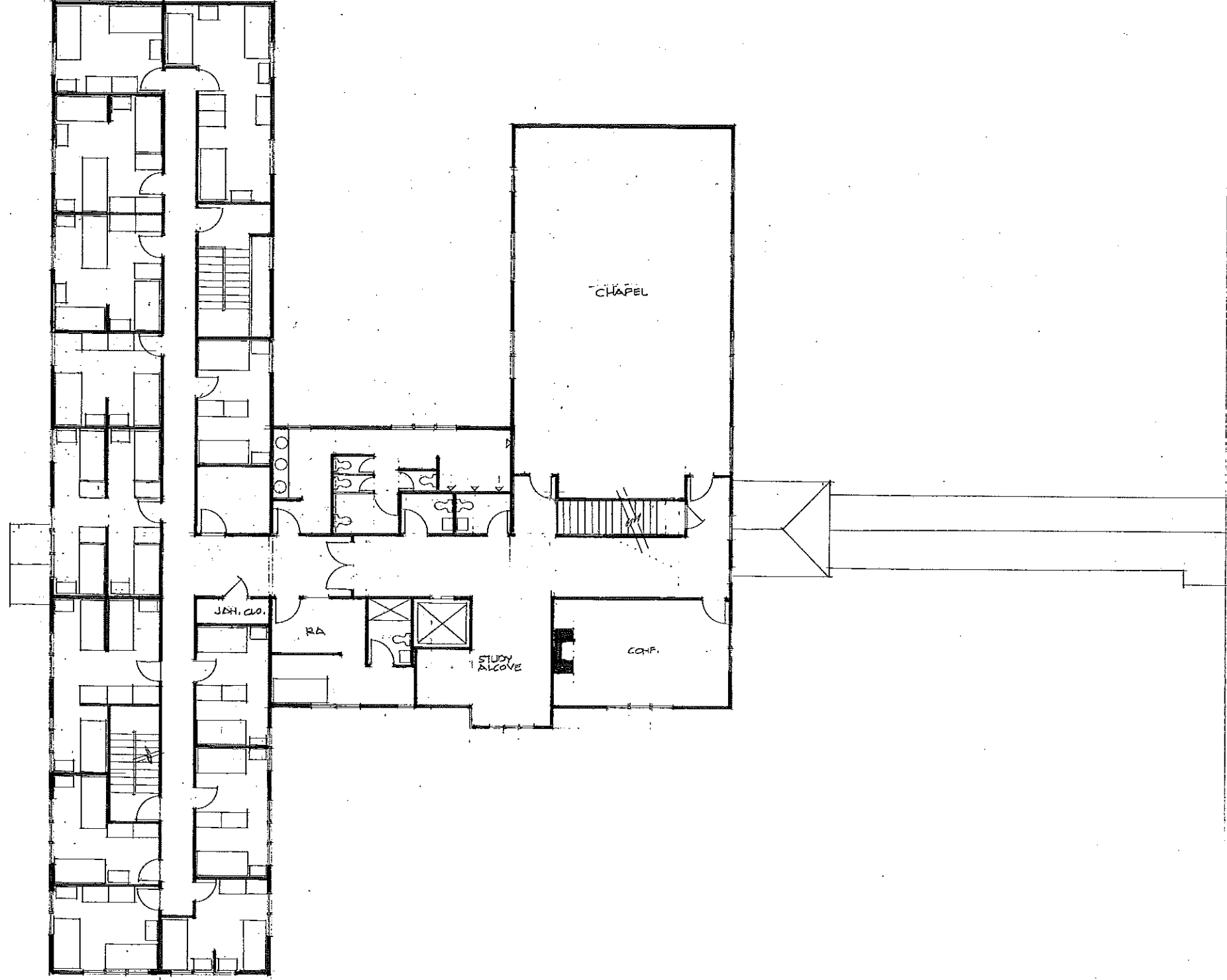
Dale H. Porath  
**A R C H I T E C T**  
8677 Bristol Park Drive  
Portland, OR 97085-3242  
503-775-0680 phone 503-775-0681 fax



BASEMENT FLOOR PLAN (JEWEL GUARD HALL)



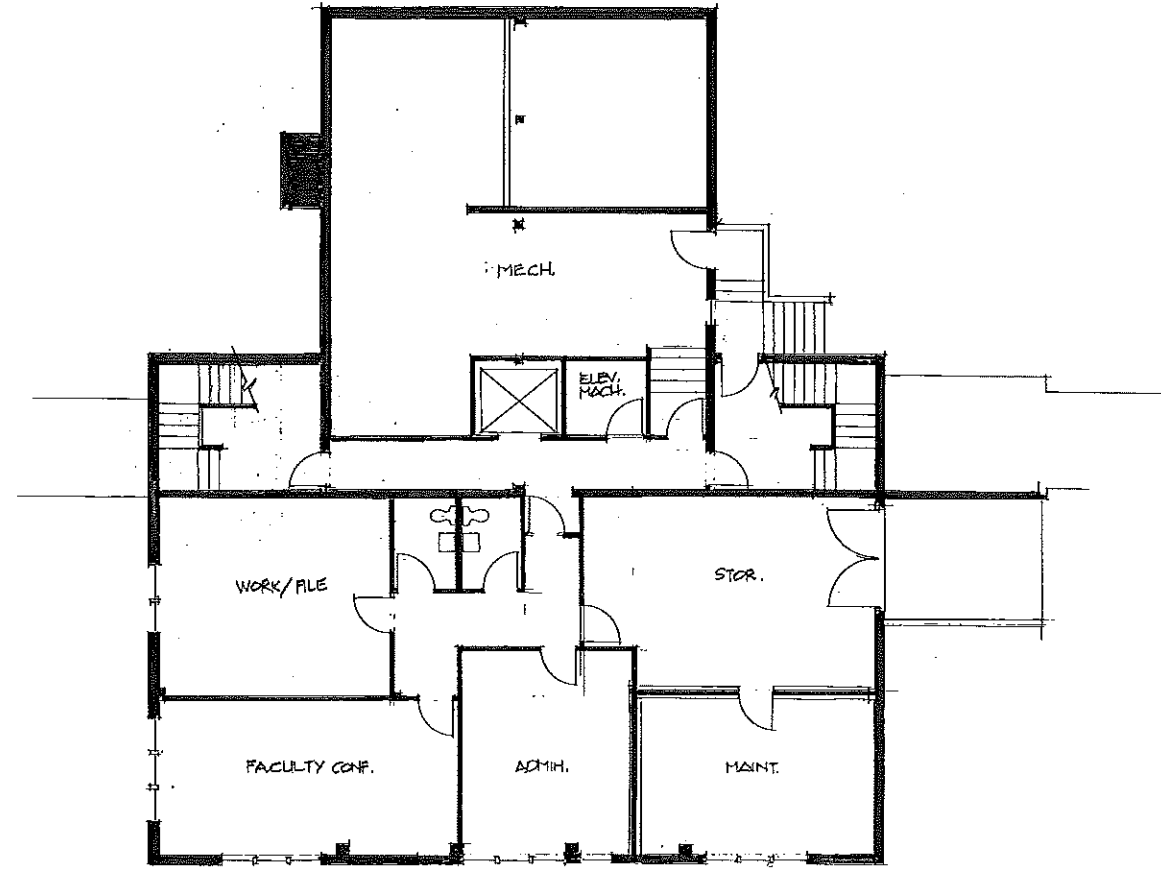
FIRST FLOOR PLAN (JEWEL GUARD HALL, WEST ARCADE)



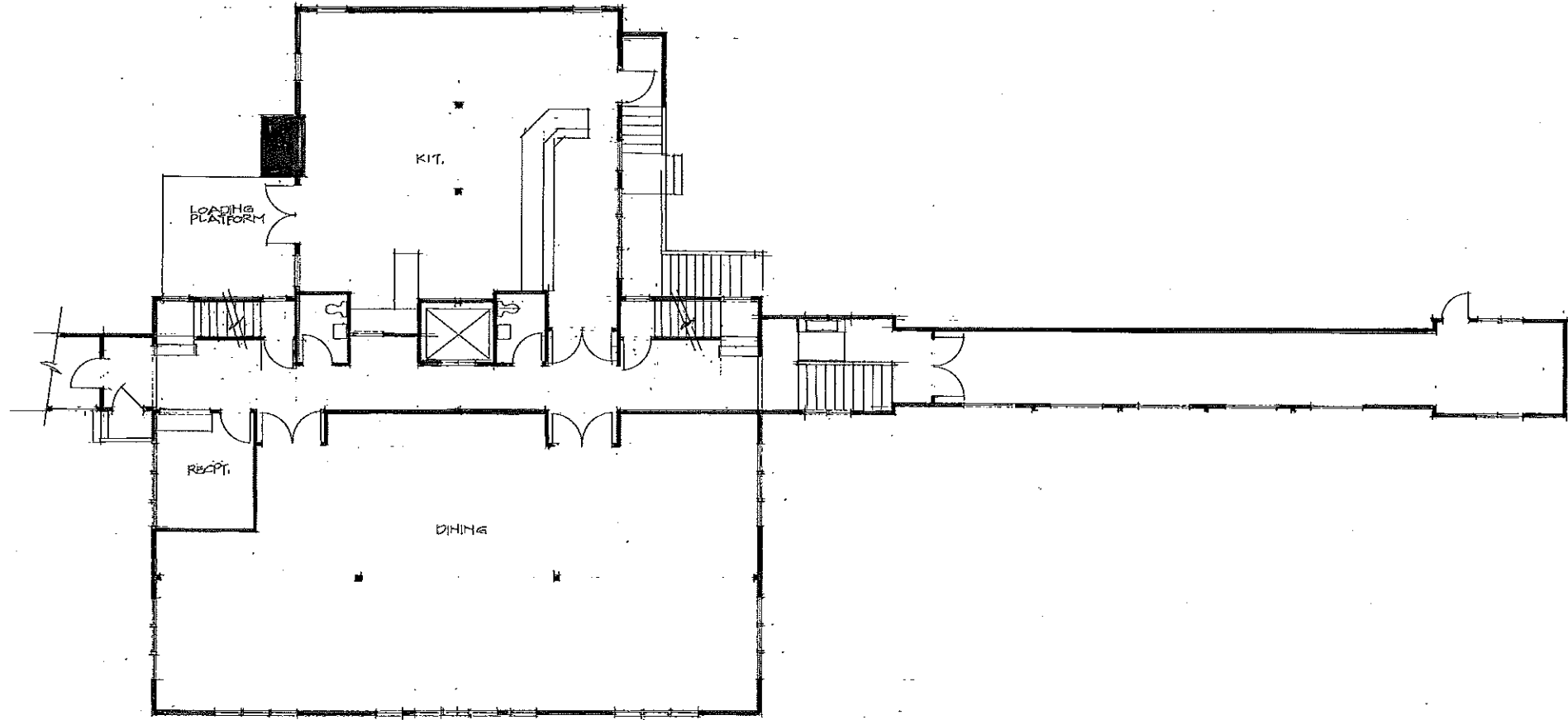
SECOND FLOOR PLAN (JEWEL GUARD HALL)

Jesse Lee Home Rehabilitation  
Seward, Alaska

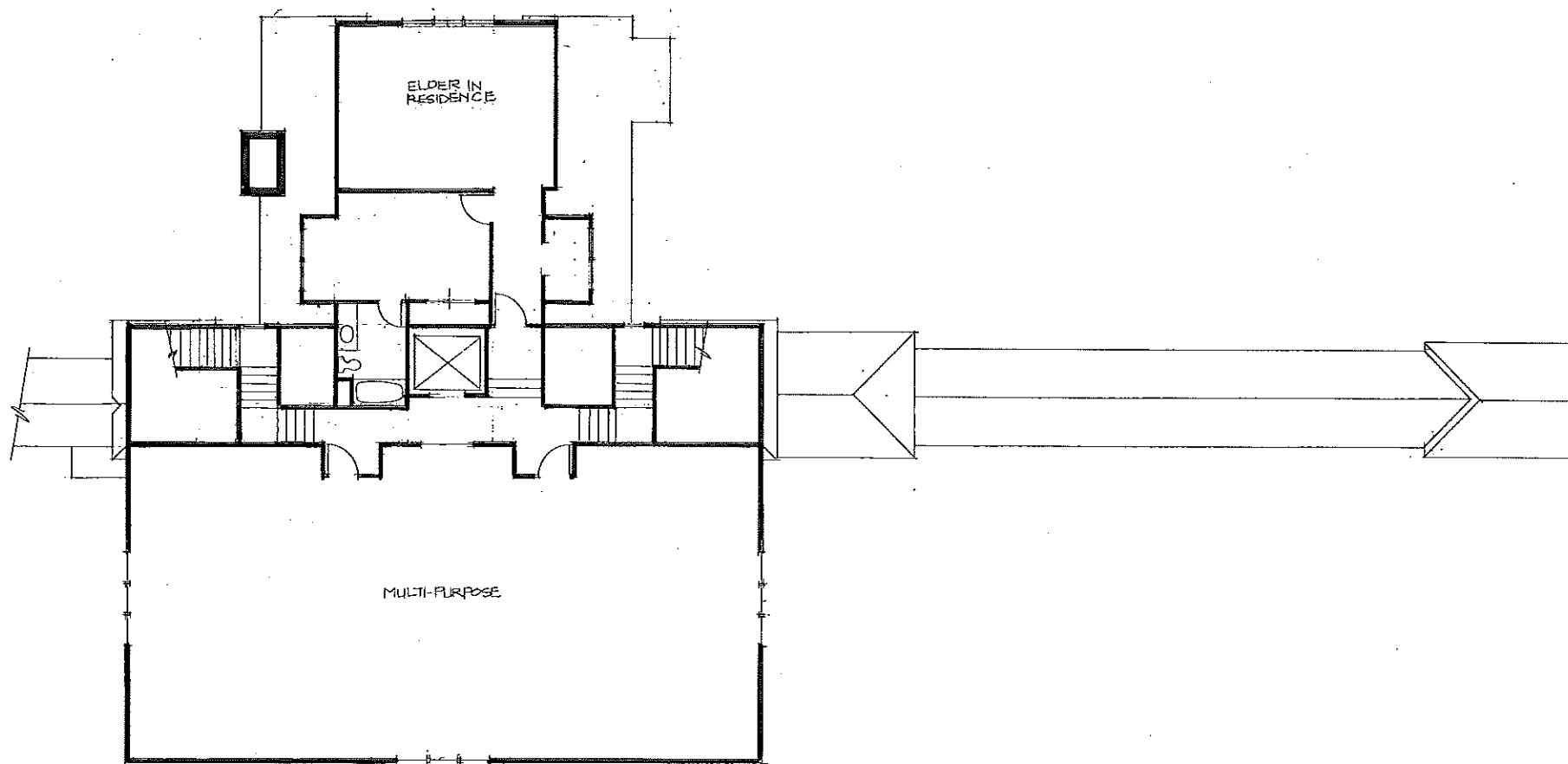
Dale H. Porath  
ARCHITECT  
8677 Bristol Park Drive  
Portland, OR 97086-3242  
503-775-0580 phone 503-775-0581 fax



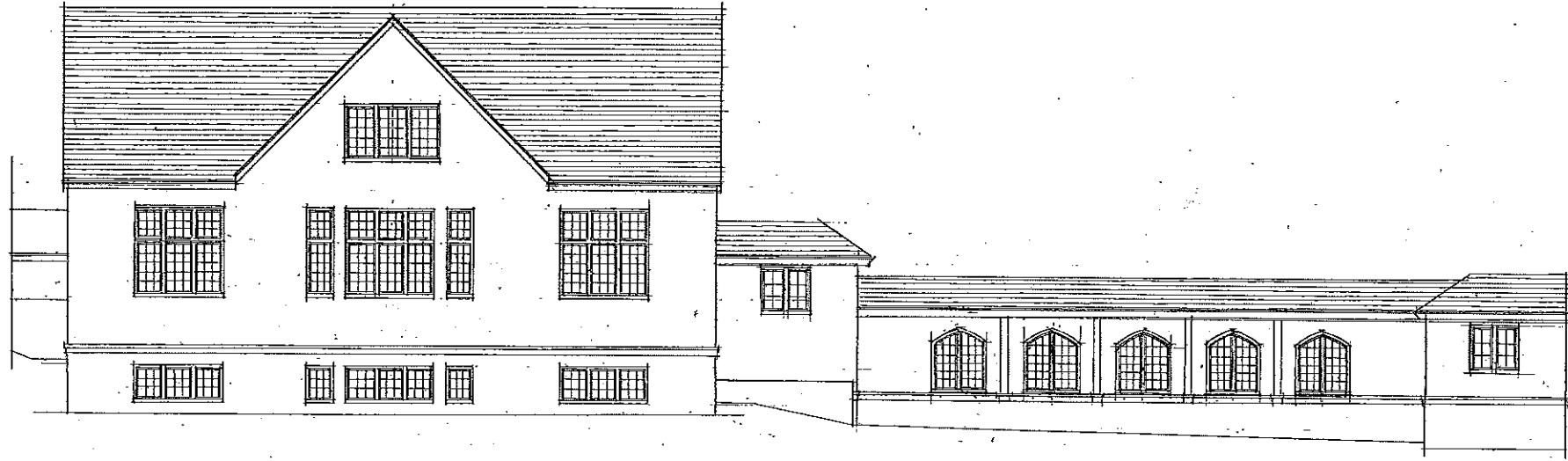
BASEMENT FLOOR PLAN (BALTO BLDG)



FIRST FLOOR PLAN (BALTO BLDG, EAST ARCADE)



SECOND FLOOR PLAN (BALTO BLDG.)



SOUTH ELEV. (BALTO BEDS, EAST ARCADE)



SOUTH ELEV. (JEWEL GUARD HALL, WEST ARCADE)